

Brandt

COOKER HOOD

**USER MANUAL
INSTALLATION INSTRUCTION**

MODEL: BHS2490GM

To avoid the risk of accidents or damage to the appliance it is essential to read these instructions before it is installed or used for the first time.

TABLE OF CONTENTS

Safety Warnings _____	1 - 5
Specifications & Components _____	6 - 7
Installation _____	8 - 12
Controls & Operations _____	13 - 17
Maintenance & Care _____	17
Troubleshooting _____	18

IMPORTANT

Please handle this product with care since it is fragile. This product is composed of steel, glass, motors, and wires. It may have sharp edges and corners, so you need to be cautious when dealing with it.

SAFETY WARNINGS

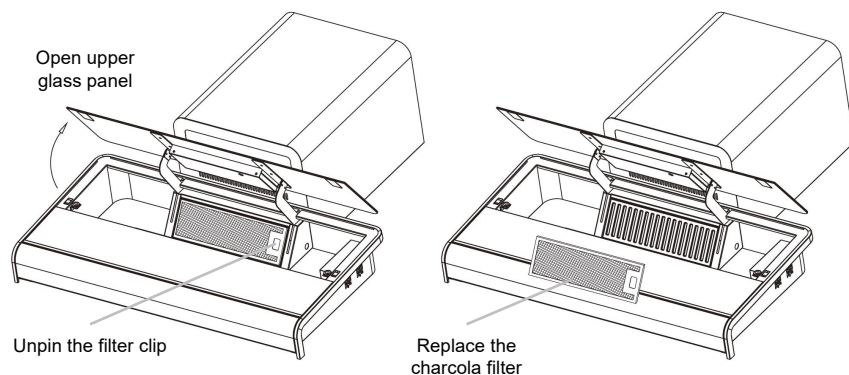
Please read this user manual thoroughly before using this appliance for the first time. This user manual contains important information regarding safe installation. Do not attempt to install the range hood in an incorrect manner to avoid damaging the appliance. Be cautious when handling the appliance and removing it from the packaging.

This product is not designed for use by individuals, including children, who have reduced physical, sensory, or mental capabilities, unless they are under the supervision of a responsible adult or have received proper instructions on the safe usage of the product. Those with limited capabilities may need assistance or close supervision to ensure the safe operation of the range hood.

TROUBLESHOOTING

Symptoms	Possible Cause	Solution
Extractor hood does not function	No electrical supply	Check that plug is connected and main power switch is turned on
Poor airflow	Grease filter clogged with grease build-up	Remove & clean the filters and refit once dry
Hood suction not effective	Inadequate ventilation	Ensure that the kitchen sufficiently ventilated to allow entry of fresh air
Sliding mechanism not functioning	Faulty part	Please contact our After Sales team
Motion control not functioning	Grease on the sensor	Clean the glass to allow No obstruction on sensor
Oil dripping from hood	Grease saturated on filter and/or oil cup	Remove filter and/or oil cup to wash, then refit once dry
Motor is running but no airflow	Butterfly valve jammed	Please contact our After Sales team
Auto-cleaning not Working	Worn out on Heating element	Please contact our After Sales team
Whirring sound	Foreign object in contact with fan blade	Please contact our After Sales team
Lights are not Working	Burned out	Please contact our After Sales team

Charcoal Filter Replacement



- Turn off the power. Press and hold the power button for 3 seconds to lock the screen. No functions (including the Motion Control) will work during this time.
- Open the upper glass panel. Gently remove the charcoal filter from the hood.
- After replacing the charcoal filter, press and hold the power button for 3 seconds again. This unlocks the screen and returns the device to the off state.

MAINTENANCE & CARE

Before performing any cleaning or maintenance tasks, make sure to turn off the power supply. Regularly cleaning and replacing the filter at the recommended intervals is crucial. As grease accumulates over time, it significantly raises the risk of fire. Do not operate the range hood when the grease filter is removed.

Cleaning the Appliance Body

- Clean the range hood using warm soap solution and a soft damp cloth. Clean continuously until grease stain is removed. Wipe dry with a microfiber cloth.
- Avoid using corrosive or abrasive products that could damage the surface.

Lighting Replacement

- Contact our After Sales department for the replacement.



You are strongly recommended to follow these maintenance & care procedures. The manufacturer will not be held liable for any damages to the appliance or fire hazard due to failure to observe the above maintenance steps.

IMPORTANT PRECAUTIONS

Unpacking

- Inspect the product for any visible damage that may have occurred during shipping. If any damage is found, refrain from using the product and contact the manufacturer or retailer immediately.
- Carefully remove all packaging materials from the cooker hood.
- Locate the user manual and any included accessories within the packaging.
- Dispose of all packaging materials responsibly, following local recycling guidelines.
- Before installation, ensure all components are present and in good condition. If any parts are missing or damaged, do not proceed with installation and contact the manufacturer for assistance.
- Cling film, polystyrene, box, wrappings must be kept out of reach of children, to avoid the danger of suffocation

For the installer

- Before installation, carefully read and understand the user manual provided with the cooker hood. Especially the dimension & height suggested from tabletop to hood.
- Always install the cooker hood over the centre of the hob.
- Use an electrical connector with earth that is correct for your location. The electrical connection of this appliance must be connected to earth (where applicable):

Green & Yellow = Earth Blue = Neutral Brown = Live

- Verify that the installation site meets the requirements specified in the user manual, including proper ventilation and electrical connections.

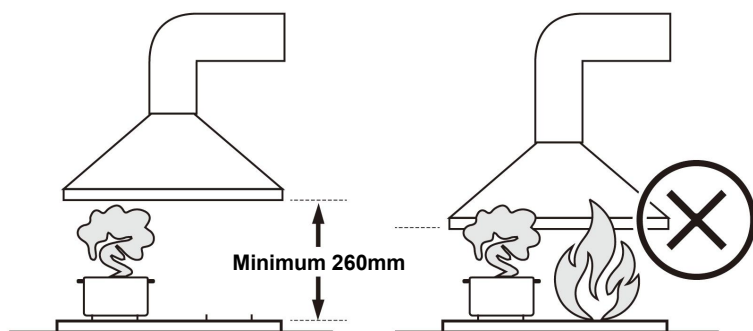


Fig. 1

- Use appropriate tools and equipment for installation to ensure proper mounting and secure attachment.
- Double-check all connections and fastenings to ensure stability and safety before operating the cooker hood.
- After installation, provide the user with instructions on how to operate the cooker hood safely and effectively.
- Advise the user to retain the user manual for future reference and maintenance purposes.
- The extractor hood can be installed over gas or electric cook top. The recommended minimum installation height is as shown in Fig. 1.
- If the instruction for the installation of gas hob specifies a greater distance, this has to be taken into account.

Liability Disclaimer

The manufacturer will not be held liable for any damages resulting from improper installation nor failure to adopt proper safety measures during installation and operation use of the appliance.



Filter Cleaning Reminder

Automatic Reminder: After the motor has accumulated 90 hours of use (even when the device is powered off), the indicator light will flash to remind you to clean the baffle filter.

Press the button briefly, the indicator light will turn on, and the lower glass panel will open, allowing you to clean the baffle filter. Once cleaning is complete, press the Power button to turn on the screen. Then press and hold the Filter Cleaning button for 3 seconds. The lower glass panel will close, and the device will return to the off state. (At this point, the filter baffle cleaning reminder timer resets to zero, and the 90-hour cycle restarts.)

Manual Activation for Filter Cleaning: If the baffle filter needs cleaning before the 90-hour cycle ends, turn on the power and press the Filter Cleaning button for 3 seconds. The lower glass panel will open for cleaning access.

After cleaning, turn the power back on, then press and hold the Filter Cleaning button again for 3 seconds. The lower glass panel will close, and the appliance will switch off.

During Operation: When the appliance is running, the indicator light will glow orange. You may use the light button to switch the lights on or off. However, the motor control, high-temperature cleaning function, and motion controls will be temporarily disabled and cannot be operated during this time.



Auto-Cleaning (Oil Removal)

High-temperature Cleaning Function: When the range hood is powered on, press and hold this button for 3 seconds to activate the high-temperature cleaning function. After the function is enabled, the indicator light will turn orange. The control relay of the heating element will be turned on. The working process is as follows:

Process: After working for 20 minutes, the relay of the heating tube will be turned off. Then, the motor will operate at gear 4 for 1 minute (for wringing/drying purposes). Once the whole process is completed, it will automatically exit and power off.

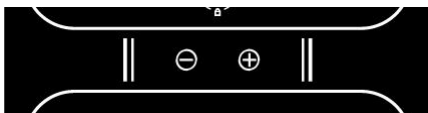
During Cleaning: During operation, only the lighting lamp button and decorative light button can be used to turn the lights on or off. The motor control button, filter reminder button, and motion control button will be disabled and cannot be operated.

Motor Function Button

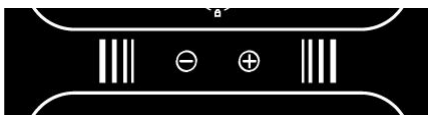


Press the button once to turn the motor on or off. After pressing the motor button to start the motor, it will directly enter the first gear. You can use the "+" and "-" buttons to adjust the speed among levels 1-2-3-4/P, or in reverse order from 4/P-3-2-1. The corresponding power levels are 1 (40W) - 2 (70W) - 3 (120W) - 4/P (285W). Once the function is turned on, the indicator light will turn orange.

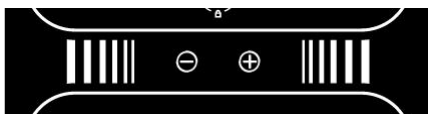
Fan Speed Levels Display



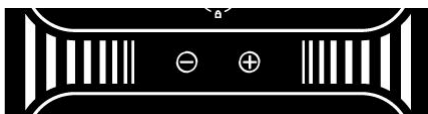
Gear 1: the light strips at positions 1 and 2 are illuminated.



Gear 2: the light strips at positions 3 and 4 are illuminated.



Gear 3: the light strips of positions 5 and 6 are illuminated.



Gear 4/P: the light strips of positions 7 and 8 are illuminated.

Starting from Gear 2, there is a running light effect for the light strips of Gear 2, Gear 3, and Gear 4/P.

For the user

- Before using the cooker hood, carefully read and understand the user manual provided.
- Ensure that the cooker hood is properly installed and connected to the appropriate power source before use.
- Familiarize yourself with the control panel and operating instructions outlined in the user manual.
- Use the cooker hood only for its intended purpose of removing cooking odours, smoke, and airborne grease.
- The hood is designed for domestic use. Do not use the hood for uses other than its specific purpose.
- Do not flambé, grill, or wok fry with fire directly underneath the hood, as this may pose a fire hazard and damage the cooker hood.
- Regularly clean and maintain the cooker hood according to the instructions provided to prevent the build-up of grease and debris, which can pose a fire hazard.
- Avoid operating the cooker hood without proper supervision, especially in households with children or individuals with reduced capabilities.
- In case of any malfunction or unusual noises, immediately disconnect the power supply and contact a qualified technician for inspection and repair.
- Do not modify or attempt to repair the cooker hood yourself, as this may result in electrical shock or other hazards.
- Keep flammable materials away from the cooking space during operation to reduce the risk of fire.
- Disconnect the power supply before performing any maintenance or cleaning tasks on the cooker hood.
- Always follow safety precautions and guidelines outlined in the user manual to ensure safe and effective operation of the cooker hood.

Disposal

- When you need to dispose of the cooker hood, make sure to comply with the local regulatory guidelines.
- First, properly disconnect the hood from the power source to ensure safety. Then, remove all the attached accessories.
- The manufacturing processes of this appliance and its packaging are designed to minimize waste and are environmentally friendly.
- This product contains electronic components. When it comes to handling its disposal, please ensure that it is handed over to your local community waste collection or recycling center.
- Electrical and electronic appliances, if disposed of incorrectly, often contain materials that can pose potential risks to human health.

Light Button Function



Short press it for the first time to turn on the light, and short press it again to turn off the light. When the function is turned on, the indicator light will turn orange.

Timer Delay Button



When a normal function is active, press the button once: the indicator light will flash orange (3-minute delay). Press again: the light will stay solid orange (7-minute delay). The device will automatically power off when the timer expires.

Motion Control Function



When the range hood is off, swipe your hand from left to right directly in front of the switch. The range hood will turn on, the light will be activated, and the motor will operate at gear 1. Continuing to swipe will cycle through gears 1-2-3-4/P-1, with gear 4/P being the highest gear.

When the range hood is on, swipe your hand from right to left directly in front of the switch. The range hood will enter gear 0 (both the light and the motor will be turned off), and enter the standby state. It will automatically turn off if there is no functional operation within 10 seconds.

Plus / Minus Button Function

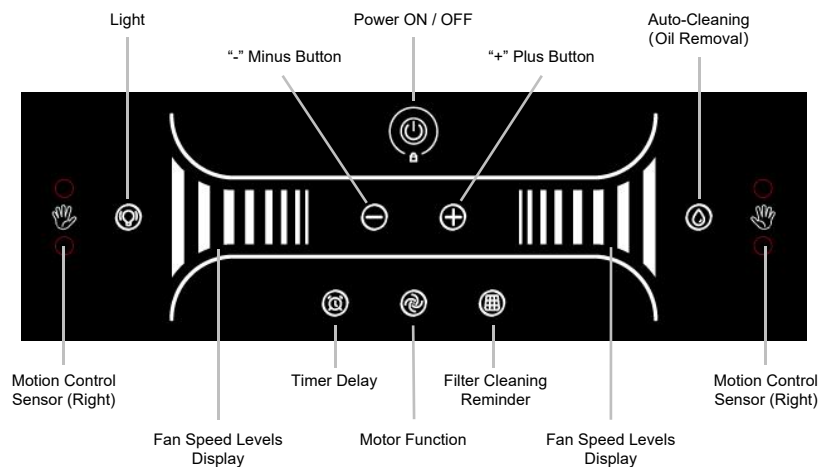


After turning on the range hood and pressing the motor button (the motor will directly enter the first gear), you can use the "+" and "-" buttons to operate among the levels 1-2-3-4/P, or in the order of 4/P-3-2-1. The corresponding power values are 1 (40W) - 2 (70W) - 3 (120W) - 4/P (285W).

When the 4th gear is reached and then the "+" button is pressed, two beeping sounds will be emitted, indicating that the maximum level has been reached. During the button operation, the indicator light will show a bright white light.

When the 1st gear is reached and then the "-" button is pressed, two beeping sounds will be emitted to indicate that the minimum level has been reached. During the button operation, the indicator light will also show a bright white light.

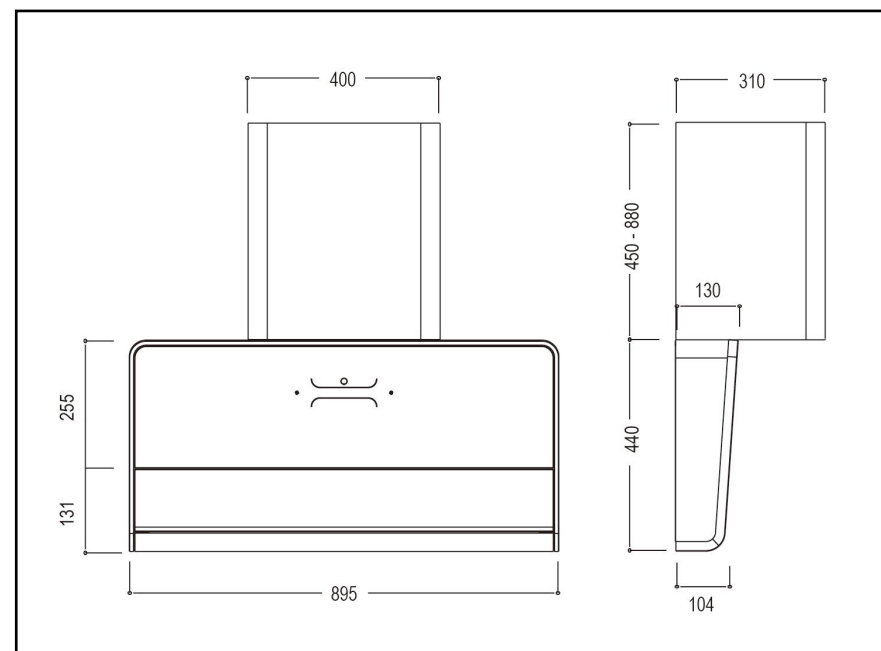
CONTROLS & OPERATIONS



SPECIFICATIONS

Model	BHS2490GM
Control	Motion & Touch control
Input	AC220-240V 50Hz
Motor	1x285W
LED Light	1x8W
Total Power	293W
Suction Power	1900m3/h
<p>Note: The manufacturer reserves the right to change any technological improvement or modification without prior notice.</p>	

DIMENSIONS



POWER ON / OFF Button

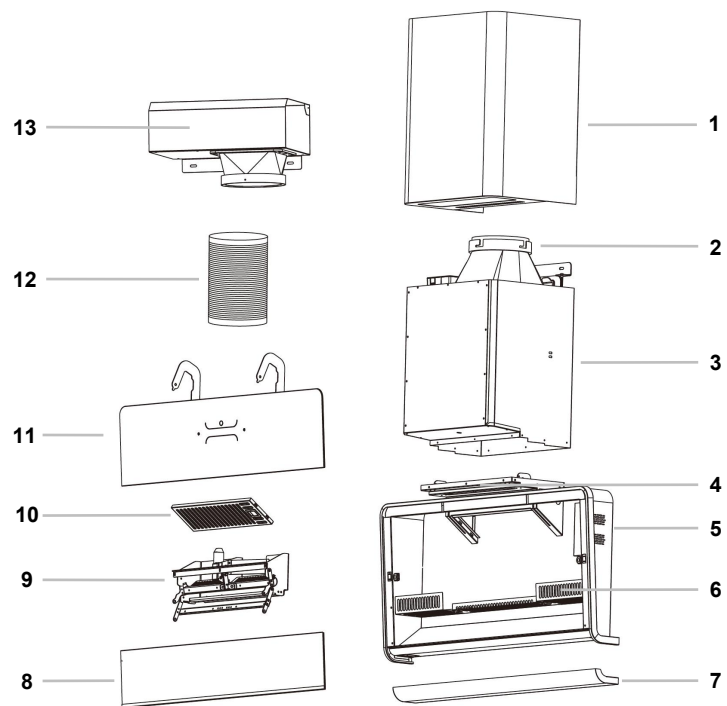


Short press to turn the device on or off. When the device is turned off, no other icons will be displayed (only the power switch icon will emit a white light). After the device is powered on, the power indicator light will turn orange, and other function keys will emit a white light (they will turn orange only when selected or in operation). The device will automatically shut down if there is no operation of any function within 10 seconds.

Screen Lock Function after Powering On: Under normal working conditions, long press the power button for 3 seconds to lock the screen. Once the screen is locked, no function can be operated (including the Motion Control), which prevents accidental operations during the normal working process. Long press the power button for another 3 seconds to unlock it.

Surface and Inner Glass Filter Cleaning Function: When the device is powered off, long press the power button for 3 seconds to lock the screen. After the screen is locked, no function can be operated (including the Motion Control). After the cleaning is completed, long press the power button for another 3 seconds to unlock it and return the device to the powered-off state.

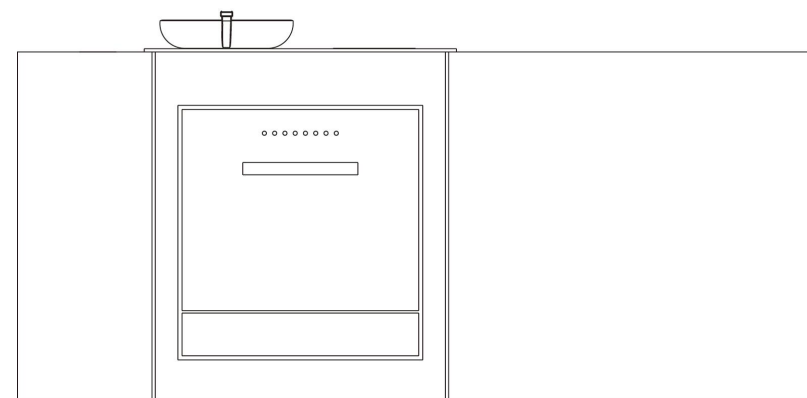
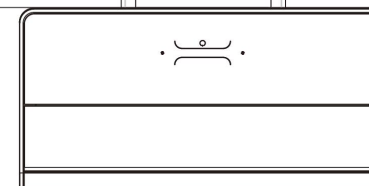
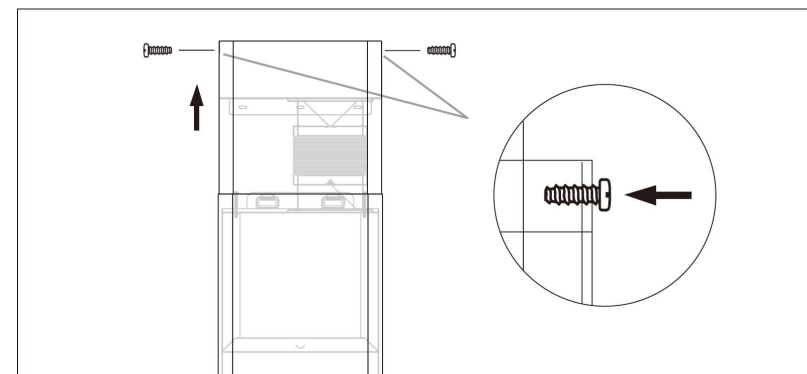
COMPONENTS



Label	Product Components
1	Duct cover
2	Air outlet
3	Motor housing
4	Light panel
5	Body
6	Metal baffle filter
7	Oil cup
8	Lower glass panel
9	Lifting system
10	Charcoal filter
11	Control panel (Upper glass panel)
12	Ducting hose
13	Air deflector (for recirculating mode)

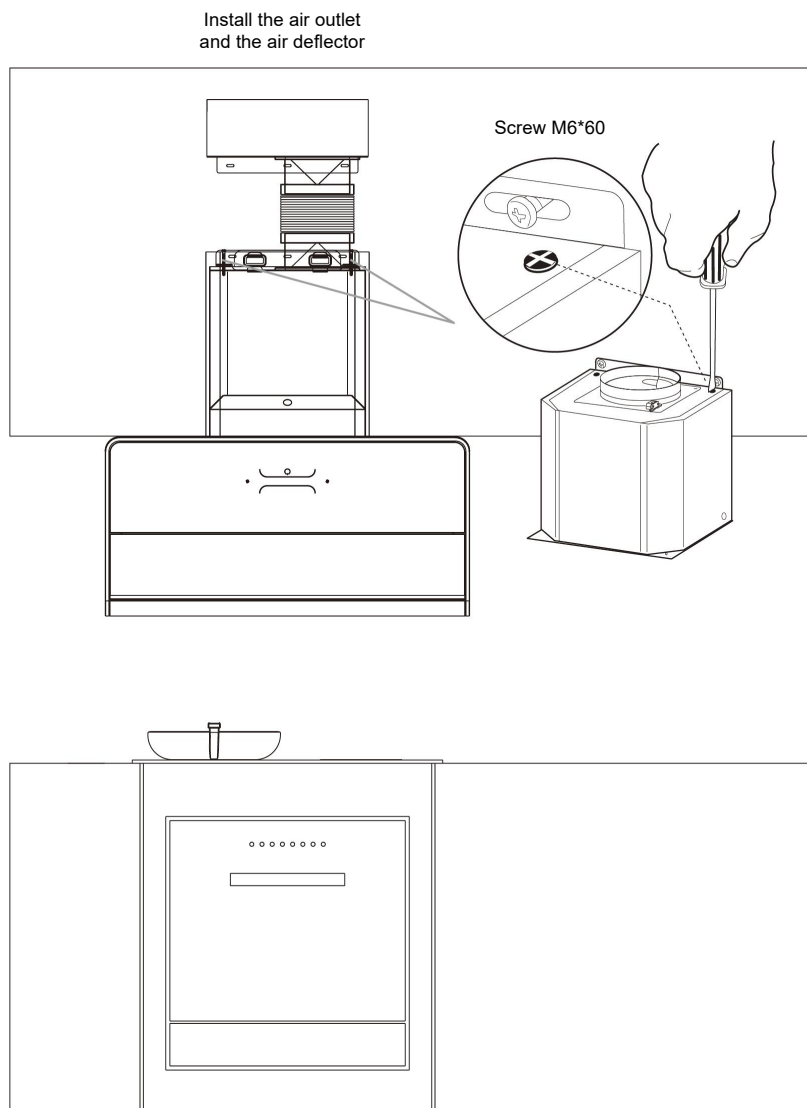
Step 4:

Pull the duct housing upwards to cover duct hose and screw at the points to fix in place.



Step 3:

Adjust the installation level of the range hood. Use 2 pcs of M6*60 screws.

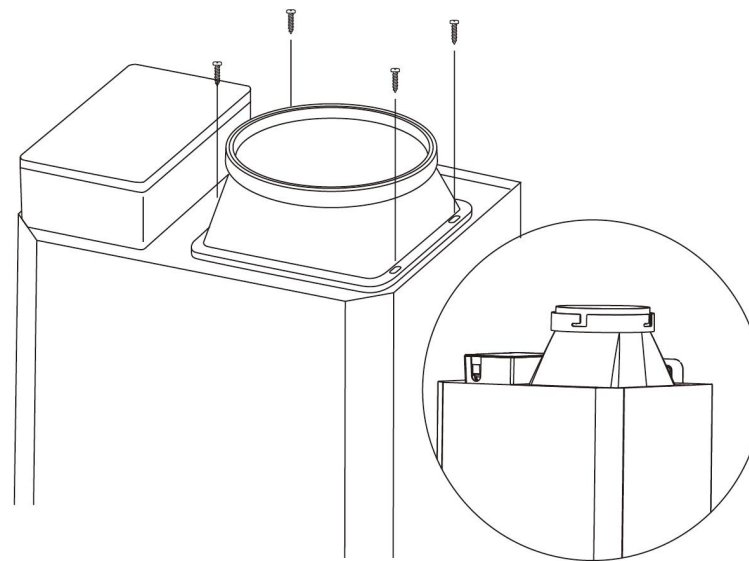


INSTALLATION

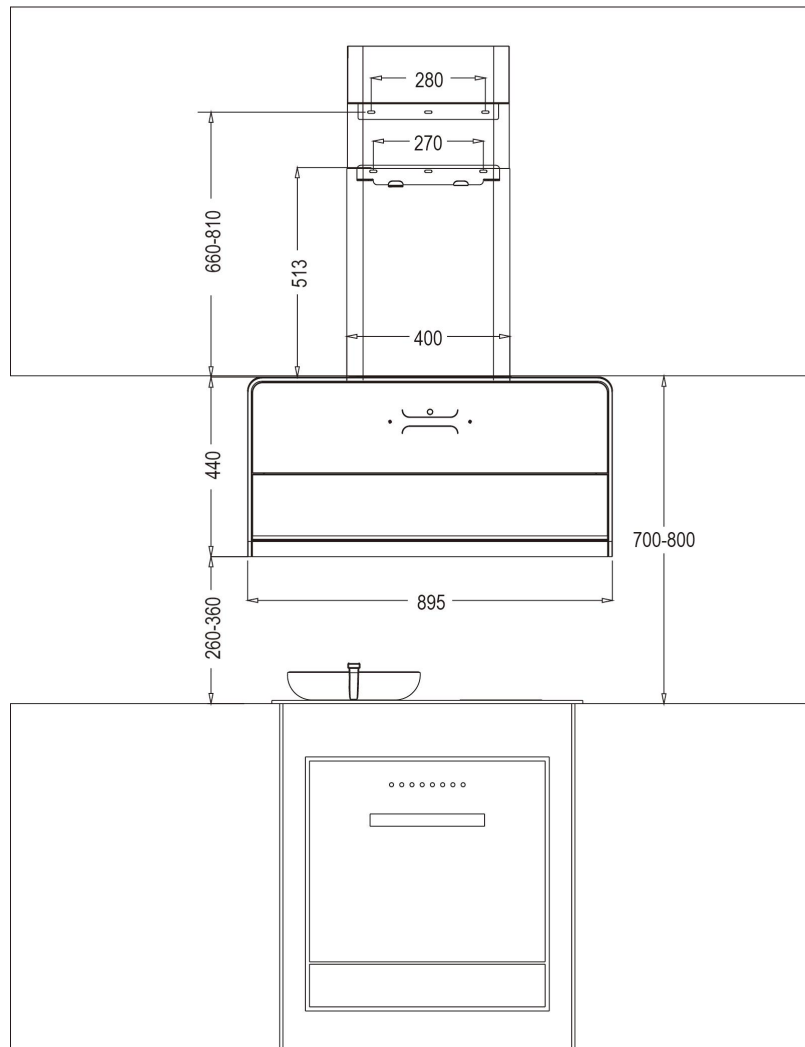
Once the appliance is out from the box please be extra caution to avoid dents, scratches, glass breaking or any other damages.

Step 1:

Install the air outlet part to the hood with 4pcs of M4*16 screws. This completes the assembling of the whole hood. Ready to install on the wall.



Installation Diagram



Step 2:

Install the hanging bracket & duct fixing plate according to the installation height on the wall at the pointed holes.

